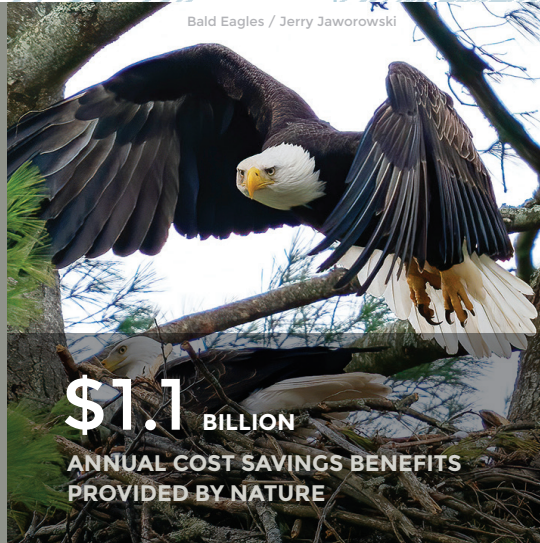


// RETURN ON
ENVIRONMENT
STUDY

**Monroe
County
2022**



Bald Eagles / Jerry Jaworowski

\$1.1 BILLION
ANNUAL COST SAVINGS BENEFITS
PROVIDED BY NATURE



Brady's Lake / Ben Goodman

\$368 MILLION
ANNUAL OUTDOOR RECREATION
REVENUE



Pocono Plateau / Dax Roggio

**PROTECTING MONROE COUNTY'S
OPEN SPACES PROTECTS OUR FUTURE.**

Monroe County's environmental resources supply our communities with sparkling clean drinking water, critical wildlife habitats, flood protection, and impressive recreational and tourism opportunities. The Monroe County Return on Environment Study demonstrates how open space and a healthy environment are integral to our economy, cost of living, and the well-being of our residents. By understanding nature's financial value, we are better equipped to strike an effective balance between protecting our natural resources and supporting smart economic growth.



Long Pond / Ben Goodman

\$164 MILLION
ANNUAL SAVINGS DUE TO
HEALTHY RIPARIAN AREAS



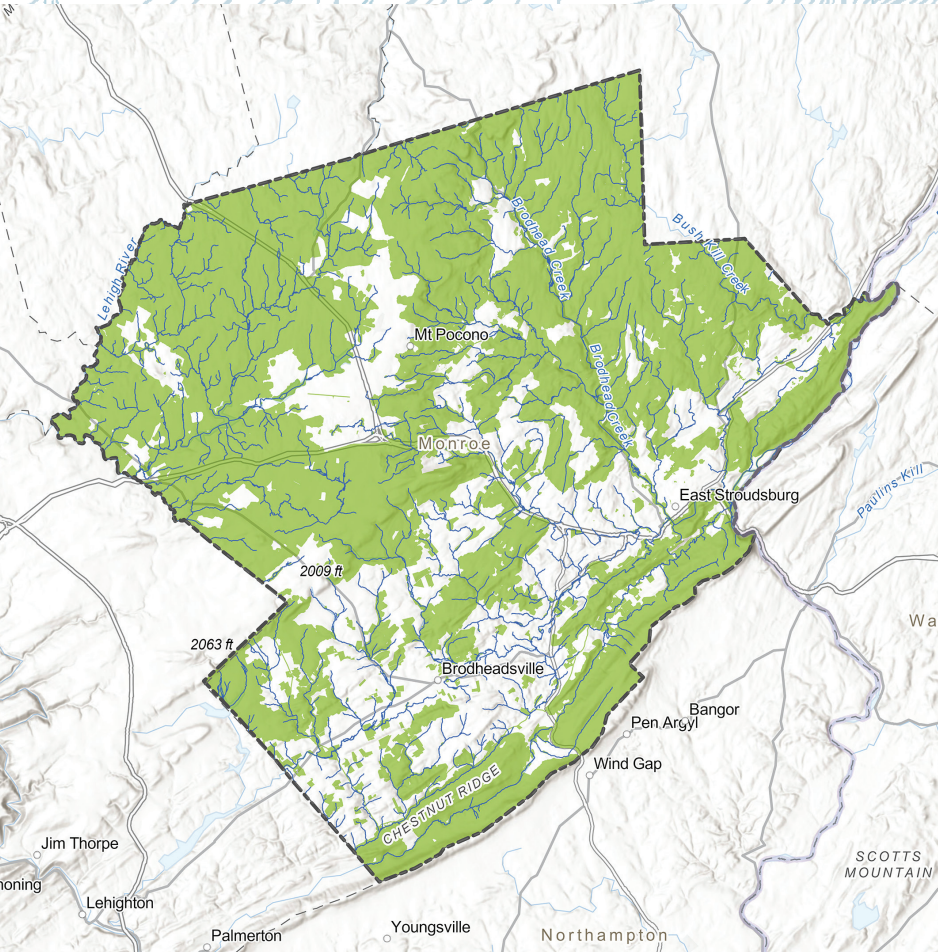
Brady's Lake / Ben Goodman

\$67 MILLION
ANNUAL SAVINGS IN REDUCED
HEALTHCARE COSTS



Heckman Orchards / Ben Goodman

\$10 MILLION
ANNUAL AGRICULTURE
RETAIL SALES



INCREASING OUR RETURN ON ENVIRONMENT

Green Ribbon Landscapes – areas where large, native forests, stream sides, and grassland habitats connect with trails, parks and green, open space – provide the highest environmental health, biological diversity, and economic sustainability.

- GREEN RIBBON LANDSCAPE
- WATERWAYS

THE CITIZENS OF MONROE COUNTY WILL CONTINUE WORKING TOGETHER TO SUSTAIN AND IMPROVE OUR QUALITY OF LIFE BY ENSURING THAT THE COUNTY'S ENVIRONMENTAL, ECONOMIC, AND CULTURAL ASSETS ARE WITHIN REACH OF ALL ITS PEOPLE.

– MONROE 2030 COMPREHENSIVE PLAN UPDATE

GO NATIVE

Native plant species ensure ecological sustainability, diminish pests, and support local wildlife.

- // Remove invasive plant species, and replace lawns with native flowers, shrubs, and trees.
- // Improve stormwater absorption by creating rain gardens and reducing paved surfaces.
- // Make a brush pile of downed leaves and branches to provide food and shelter for wildlife.

GROW TOGETHER

Connected healthy habitats protect water sources, improve air quality, and benefit the community.

- // Share photos of your native garden and local wildlife on social media and community websites.
- // Organize a neighborhood landscape challenge or community native plant and seed swap.
- // Limit mowing along waterways to reduce erosion and support clean water for the community.

GET INVOLVED

Awareness, inspiration, and action will lead to better policies for environmental protection.

- // Support local conservation efforts to protect open spaces and watershed wildlife corridors.
- // Promote the use of native plants in parks, trails, community gardens, and public spaces.
- // Join the Pocono Heritage Land Trust or Brodhead Watershed Association.